

Cockshutt-cum-Petton Parish Plan



2018 - 2023



Introduction

Our parish plan is a plan designed for the community by the Community, a document which sets out a shared vision of how our community wants the parish to develop over the coming years. It covers a range of social, economic and environmental issues that have been identified by consultation with our own residents as being central to our community.

Our Cockshutt-cum-Petton Parish Plan sets out the key concerns that the Community feels should or would like to happen in the form of an action plan. It shows the actions, those who need to be involved and some of the constraints on delivery of those actions. It was felt that as this was the parish's first formal plan, trying to identify priorities and timescales was too subjective and therefore these have not been included in this plan. The plan is therefore a tool that can be used by the parish council and many other groups or individuals within the community to shape the future of the parish.

It is hoped that development and publication of the Cockshutt-cum-Petton Parish Plan will:

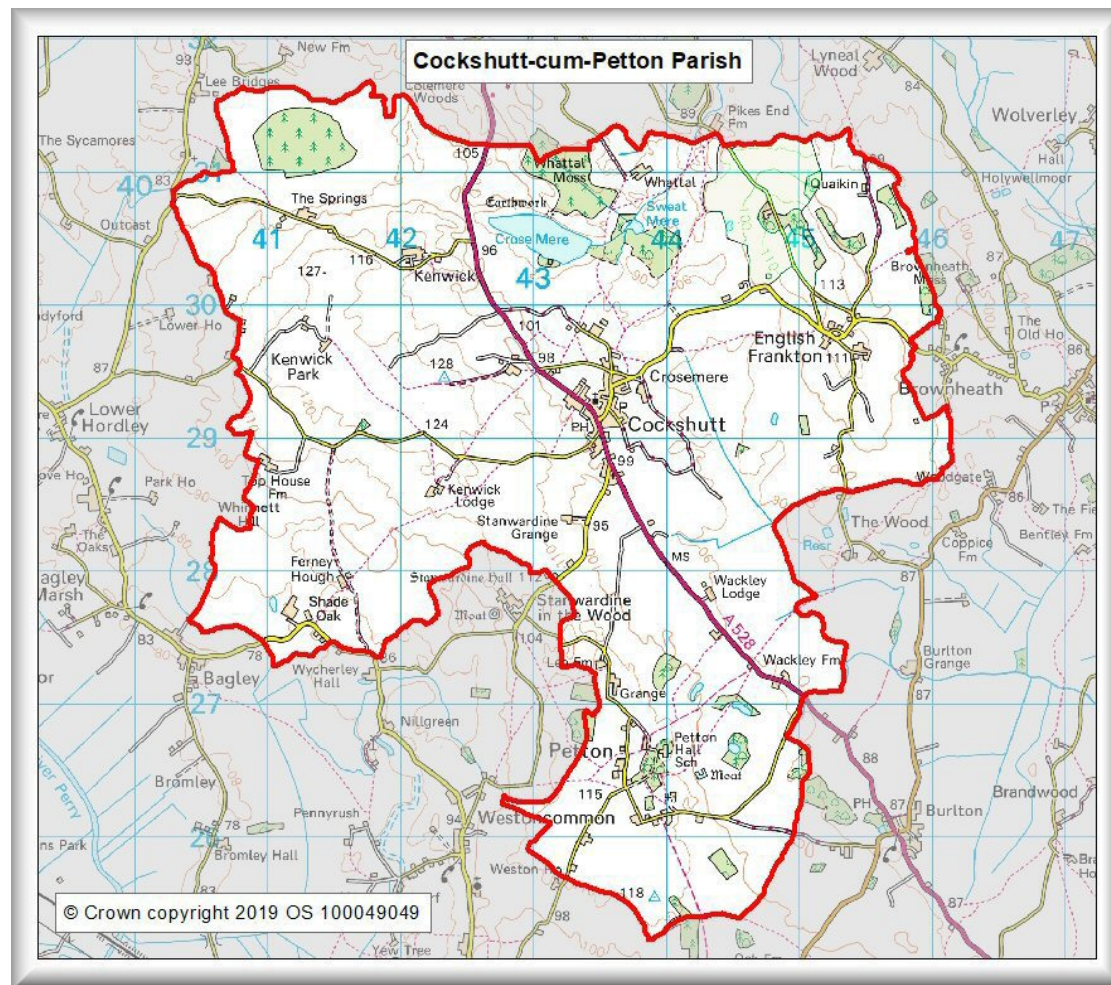
- strengthen the Community;
- facilitate the maintenance and improvement of services;
- encourage greater participation in the Community by local residents;
- inspire our community to influence local decision making;
- identify projects which need outside help for fulfilment;
- identify opportunities for funding.

The initial idea of a parish plan was suggested by the parish council and delivered by a wider Steering Group of volunteer members from our community, together with at least one parish councillor over a two-year period, with the completed plan adopted by the parish council at its June 2019 meeting. Our Plan has a 5-year life and is intended to be a living document that will be referred to and implemented throughout that period. It is proposed therefore to be informally reviewed every year by the Steering Group and formally reviewed at the Annual Parish Meeting which is an open public meeting hosted by the parish council. In the spirit of partnership and collaboration, we envisage that the community can remain fully engaged with their plan.

The overarching aim of the plan is to sustain the rural character of the parish, encourage the maintenance and improvement of services and seek to support the wellbeing of all of its residents whilst recognising that some limited small-scale development will have to be accommodated to help to sustain the viability and vitality of the parish.

Cockshutt-cum-Petton Parish

Cockshutt-cum-Petton Parish is approximately ten miles north of the county town of Shrewsbury and straddles the A528 road to Ellesmere. The area is rural in nature and contains two of North Shropshire's famous meres. It is mainly given over to agriculture and rural businesses. The parish has two main settlements, the larger, Cockshutt, with its church, a popular primary school and nursery, post office, a public house, garage and a modern village hall (called the Millennium Hall) and somewhat smaller Petton with its own church. Ancillary settlements include English Frankton and the more scattered Kenwick. The population is in the region of 850 and has a well distributed demographic not untypical of rural West Midlands. Employment within the Parish is a mixture of agriculture, provision of local services and self-employment, but with a sizeable number of people commuting to nearby towns and larger cities. The area has a good sense of community based around the churches, the school, the pub and the Millennium Hall which fosters a number of active groups.



Community Survey – How did we get here?

The Steering Group was set up after a request from the parish council and is made up of volunteer residents of the parish and parish councillors. An initial consultation exercise asking residents what made them 'Mad, Sad and Glad' about living in the parish was carried out during Summer 2017.

The Steering Group engaged with Shropshire Rural Communities Charity (RCC) to design a household survey which was distributed during May 2018 as part of evidence gathering in order to draw up a parish plan.

Distribution of the surveys was organised and carried out wholly by members of the Steering Group and other volunteers. A total of 350 forms were distributed.

The survey was designed to be completed by household, so that the views of everyone in each household could be combined into one response. But as it could also be filled in on-line, if there was anyone in the household with widely differing views, they could submit their own entry. In total 122 valid paper and online submissions (cases) were received and analysed by Shropshire RCC; this equated to an overall response rate of 35%. All data collation was completed by Shropshire RCC. A standard set of rules was used during the collation and input to deal with any anomalies or queries on the forms. No personal details were collected from the responding household so all answers were anonymous. Not all respondents answered all questions in part or in full. The quantitative Survey Analysis Report was published in July 2018 and is available on the parish website:

<https://www.cockshuttumpetton-pc.gov.uk/wp-content/uploads/2018/10/Cockshutt-cum-Petton-final-report-quantitive-data-final.pdf>

The survey invited comments in some areas and these were included in analysis of the responses which formed the basis of this plan.



Cockshutt-cum-Petton Parish Plan – Housing and Building Development

Summary of responses (85-95%): There is a desire to continue housing development in Cockshutt Village only, but on a limited and controlled scale.

Survey Indicator	Desired Outcome and Justification (where relevant)	Action required	Stakeholders	Control factors
19 respondents said that they would be looking to move within the parish in the next 5 years, the majority to Cockshutt. Their preference was for housing to buy, the most popular requirement being 3-4 bed	Have sufficient homes for existing parishioners to move to, in Cockshutt. To be met by turnover of existing stock and by some new development	Continue to support limited small-scale development in Cockshutt	Parish Council Shropshire Council	Local and national planning policy. Availability of existing houses or development sites. Place plan
A small number of people wanted to move to the other smaller settlements in the parish	Demand for housing in the rest of the parish to be met largely by turnover of the existing stock	Maintain the current planning category for the parish, outside the current 'Hub' status of Cockshutt, as 'Countryside'	Parish Council Shropshire Council	Local and national planning policy Availability of existing houses
69% of respondents wished to see some new housing built in the parish in the next 9 years, but there was little consensus on the numbers to be built	Restrict new housing in Cockshutt to no more than 10% increase on existing housing stock (2018-2027). In 2018 there were 14 approved dwellings and an allocated site for 5, all un-built. The balance would be around 5 new houses. There is no indication of a desire to see development in the rest of the parish	Move from 'Hub' to 'Cluster' status for Cockshutt in the 2018-19 Local Plan Review, whilst retaining 'Countryside' status to the rest of the parish Publish the parish plan on parish council website	Parish Council Shropshire Council	Local and national planning policy
The most desired housing types were 1/2, 3/4 bed open market to buy, together with low-cost market and sheltered for local people to both rent or buy	Small developments of smaller-sized housing that is financially accessible to local, young and elderly people	Support developments with a small number of units (up to 2 or 3 on a site) which are aimed at local people's needs, first-time buyers and young families	Parish Council Shropshire Council	Local and national planning policy. Public demand for those types of house. Developers' interests

Survey Indicator	Desired Outcome and Justification (where relevant)	Action required	Stakeholders	Control factors
A substantial majority wanted any development to be conversions, infill, or re-using brownfield/derelict land where possible	Small sites between existing buildings or are on derelict or under-used land	Support applications for conversions (but not of community assets), in-fills and derelict land	Parish Council Shropshire Council	Availability of sites within the village that meet the criteria
Greenfield sites, Millennium Hall fields and the school fields should not be developed	Protect the Millennium Hall and school green spaces and seek to minimise the use of greenfield land	Ensure that the Millennium Hall's recreation ground is listed as an 'Asset of Community Value' Resist speculative planning applications on greenfield sites around the edges of the village	Millennium Hall Diocese Land owners Parish Council Shropshire Council	Local and national planning policy Continued viability of school and Millennium Hall



Cockshutt-cum-Petton Parish Plan – Activities, Amenities and Community Spirit

Communication is the key to broadening involvement across the whole community

Survey Indicator	Desired outcome and Justification (where relevant)	Action required	Stakeholders	Control factors
A variety of means are utilised to find out about events and activities, although word of mouth was most common	Promotion of events and activities across the parish in order to boost involvement and sense of community	Maintain and update noticeboards throughout the parish Update community website(s) and social media pages	Parish Council Church council Local residents Noticeboards including the one at Petton Hall	Finance Agreement from owners of noticeboards
Over a third of respondents showed interest in joining a volunteer group	Encourage volunteering across all sections/areas of the parish	Volunteer co-ordinator to connect those wishing to volunteer and those requiring volunteer assistance	Parish Council Community groups	Willingness to volunteer
Utilisation of Cockshutt Primary School	Sustainability of primary school and nursery	Encourage school and community links and encourage young families into the parish	School Parish Council Shropshire Council	Pupil numbers
Over 80% of respondents use the Millennium Hall	Increase volunteers to support and maintain use of the hall	Inform the residents of the existence and purpose of the hall and encourage volunteers	Residents Millennium Hall committee Parish Council	Willingness of volunteers to run the hall Utilisation by local people Utilisation by event organisers
Jubilee Field	A green area with a Multi-Use Games Facility, to include Millennium Hall patio, additional car parking and landscaping.	Acceptance of groundworks quotations, sourcing funds and construction.	Parish Council Appointed Contractors	Substantial funding to be sourced Management of the site during and after development.

Cockshutt-cum-Petton Parish Plan – Environment

The local environment is important to people and where possible measures should be taken to maintain and improve it.

Survey Indicator	Desired outcome and Justification (where relevant)	Action required	Stakeholders	Control factors
Most people regarded access to the countryside using existing footpaths as important	Clear signage of well-maintained rights of way	Regularly check rights of way signage and replace where damaged or deficient	P3 Group/SC Great outdoors team. Land owners	Financial Labour Land owners permission
Our existing green spaces are valued	Ensure that existing green spaces are protected	Seek to protect existing green spaces such as the playing field and Jubilee field Prevent parking on Green Spaces	Shropshire Council Planning authority Parish Council Land owners	Public engagement
Protect & enhance our countryside	Protection of the existing trees and hedges. Well maintained hedgerows	Encourage maintenance of hedgerows, verges and trees Increase public awareness of link between rural character and presence of farm machinery Encourage drivers to respect the roadside environment	Land owners/Farmers Volunteers Appointed contractors	Financial Public Engagement
Dog fouling in public areas was seen as a major problem	Control and reduce dog fouling	Educate dog walkers Increase awareness of residents' ability to report fouling to dog warden.	Shropshire Council Parish Council Dog owners	Willingness of dog owners to obey the law
People are happy to see domestic solar installations	Encourage solar panel installation on domestic (existing and new) properties	Allow through planning, when approval is required.	Shropshire Council Planning authority	Willingness to invest

Cockshutt-cum-Petton Parish Plan – Public Community Services

Most residents are satisfied with the services that they use, but there is a desire for a greater range and availability of services.

Survey Indicator	Desired outcome and Justification (where relevant)	Action required	Stakeholders	Control factors
The majority of responses to the questions on this subject were at least satisfied with the current provision	Maintain current levels of collection of household non-recyclable and recyclable waste.	Oppose changes to the service which could be detrimental.	Residents Parish Council Shropshire Council	Expense Space for receptacles
There is good support for the mobile library service from its users	Increase the usage and therefore viability of the mobile library service.	Increase awareness of the service	Residents Shropshire Council School Parish Council	Expense Public engagement
The majority of respondents were satisfied with the provision of street lighting.	Maintain the existing street lighting in Cockshutt.	Parish council to continue maintaining street lighting. Support the residents of The Meadows in getting their lighting operational	Parish Council Shropshire Council	Perception of need Expense
Most respondents were at least satisfied with the current public open spaces	Maintain and protect the current provision of public open spaces and improve them	Progress with the Jubilee Field Project.	Residents Parish Council Shropshire Council	Expense Potential plans for existing open spaces Availability of new open spaces

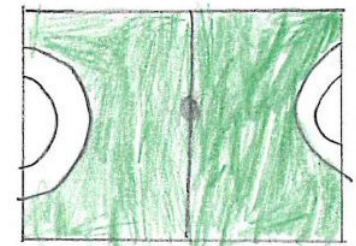


Cockshutt-cum-Petton Parish Plan – Public Transport, Traffic and Safety

Speeding throughout the Parish is a cause for concern

Survey Indicator	Desired outcome and Justification (where relevant)	Action required	Stakeholders	Control factors
Almost everybody thought speeding through Cockshutt was a problem	Reduce speeding throughout the Parish	Install speed display sign for vehicles entering Cockshutt from the north. Enforce speed restrictions by establishing a Speed Watch group. Implement the traffic-calming measures deemed necessary from safety survey in Cockshutt	Shropshire Council Safety camera partnership Police Residents Road users	Financial Public engagement Enforcement Sufficient volunteers
About half of respondents use the existing 501 bus service at some time.	Maintain existing 501 bus route and service. Provision of community bus service to other destinations.	Use the bus service we have. Voluntary effort to engage with a community bus service	Shropshire Council Bus companies RCC Community Bus Group. Local voluntary co-ordinator	Financial Volunteers
Most respondents are satisfied with the provision of bus shelters	Maintain & improve the provision of bus shelters	Maintain the one for passengers travelling towards Shrewsbury Consider installing one for buses travelling towards Ellesmere	Residents Parish Council Shropshire Council Bus company	Residents nearby Expense Suitable location

Football Pitch



Cockshutt-cum-Petton Parish Plan – Business and Employment

Do the members of your household think it is a good idea to try and create more employment opportunities within the Parish?

Survey Indicator	Desired outcome and Justification (where relevant)	Action required	Stakeholders	Control factors
Retail Outlets Amenities	Viable general store and post office in Cockshutt. Currently no shop and a post office only open two days per week	Consider possible premises, including integration with existing property, public house, Millennium Hall. Support volunteers to create a community shop.	Residents' group Community Plunket Foundation Post Office	Commercial decisions Premises Volunteers Communication management
High Speed Broadband	Full parish coverage e.g. Petton and English Frankton	Continue communications with Openreach to determine timescales. Inform consumers of availability	Openreach Parish Council Airband	Feasibility Communication Timescale Cost to consumers
Mobile Phone Service	Improved signal and coverage	Installation of tower as per approved planning consent Continue communications with telecom provider	Clarke Telecom Parish Council	Communication Workload of provider
Creation of more employment opportunities within the parish	Residents would prefer employment opportunities in small i.e. light/cottage sectors, e.g. small-scale warehousing, professional services, catering and agricultural, but not in heavy industry	Supporting existing businesses within the parish and determine availability of suitable land/properties	Parish Council Parish residents Businesses in the parish	Commercial decisions Availability of land/premises Management Communication
Catering and Hospitality	Successful public house, food outlets, and Millennium Hall in Cockshutt	Continue supporting and encouraging local businesses Encourage use of facilities by all sectors of community	Licensees Community groups Millennium Hall	Business viability Communication Promotion Commercial decisions
Health Services, Doctor, Dentist, Pharmacy	Weekly doctor's surgery at the Millennium Hall Insufficient justification for a dentist and pharmacy	Contact Ellesmere medical practice to assess feasibility	Millennium Hall Ellesmere medical practice	Viability
Farming and Agricultural services	Encourage recognition of the role of farmers as custodians of the rural community	Promote awareness of farming practices	Parish Council Farms Community	Communication Promotion Residents' participation

Comments from residents in the survey in addition to the requested information:

Vehicles obstructing the pavements on the main road and green

Encourage the use of solar panels

Activities and facilities for teenagers

Preservation of the history and character of the community

Any large development will see dangerous access onto already busy main road

Mains gas supply to the village

Improvement to mini roundabout by Millennium Hall

Zebra crossing required by the school

CCTV cameras to reduce vandalism and more police patrols

More dog waste bins in the village

Improve village road signage and provide benches around the village

Cockshutt in bloom competition and a deposit box/stall for garden produce

Restrict parking on the main road between shop and post office

Traffic mirror for Crosemere Road junction

Summer fete

Street lighting improvement

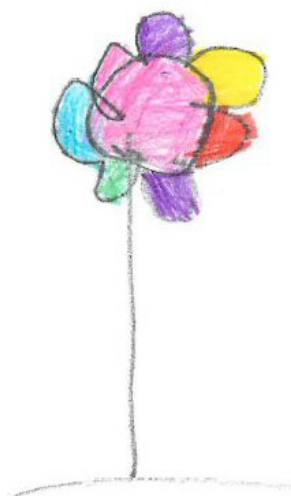


Appendix A

Survey Return Data

Residents over 18

Return Rate 35%



Question	Responses	No. of Respondents	Percentage of all respondents
Sex	Male	126	50.6%
	Female	123	49.4%
Age	18-21	12	4.8%
	22-29	19	7.6%
	30-39	20	8.0%
	40-49	39	15.7%
	50-59	57	22.9%
	60-69	44	17.7%
	70+	58	23.3%
Employment Status of Participating Household Members	Employed	119	47.8%
	Self Employed	35	14.1%
	Unemployed	3	1.2%
	Retired	77	30.9%
	Education/Other (adjusted)	15	6.0%
Employment Location of participating Household Members	At home	34	21.1%
	In the Parish	5	3.1%
	Outside the Parish	122	75.8%
Employment Locations of 122 Residents working outside the Parish	Oswestry Area	13	10.7%
	Shrewsbury, Ellesmere, Wem	62	50.8%
	Further Away	47	38.5%
Duration in the Parish by Participating Household	Less than 1 year	14	11.8%
	1-5 years	15	12.6%
	6-10 years	13	10.9%
	11-15 years	15	12.6%
	16-20 years	15	12.6%
	More than 21 years	47	39.5%

Acknowledgements

The Parish Plan Steering Group was comprised of the following residents who gave their time and knowledge to develop this plan for the benefit of the whole community:

Linda Baumgartl (Parish Council Representative)

John Cooling (Parish Council Representative)

Penny Inglis

Ian Webb

Loft Longhurst

Ewan Williamson

The Steering Group would particularly like to thank Renee Wallace of Shropshire Rural Communities Charity for her considerable assistance with the development of the questionnaire and for analysing and reporting of the results of the survey.

Thanks are also due to the Parish Council for funding the project, the Millennium Hall for hosting public and steering group meetings, Cockshutt Primary School children for the illustrations, proof-readers, and the various other villagers who gave up their time collating and distributing both the questionnaire and this plan to every home in the parish.

