

Cockshutt-cum-Petton Parish Council

Environmental Maintenance Scheme FY2020

Description of the Scheme

The Scheme

The objectives of the scheme as defined by Shropshire Council (SC) are:

- supporting Shropshire Council's status as a Level 3 Asset Management Authority i.e. by conducting works which will increase the life span of the highway by, for example, clearing gullies, drains and ditches to eradicate standing water;
- the betterment of existing services;
- increasing highway safety;
- enhancing the local economy e.g. tourism;
- the use of volunteers;
- the Shropshire pound

It is a requirement that any works are only carried out on Shropshire Council land.

The Scheme is funded by the Parish Council and is match funded by SC via a grant of £1,500, which has already been received. The total available expenditure for the current year, FY 2020, is therefore to be £2,999 to conform to the PC's Financial Regulations (11.1 h) which require the PC only to "strive to obtain 3 estimates". Any underspend will be carried over to next FY with the appropriate reduction in next year's grant, or if required repaid to Shropshire Council in accordance with Shropshire Council's Environmental Maintenance Grant policy.

Defined location of works

- SC owned land within the Parish which in our case is confined to the adopted roads.
- The extent of the roads along with the Parish boundaries are shown on the Parish Plan overleaf.
- For health & safety reasons the main A528 Shrewsbury-Ellesmere Road should only receive maintenance in those parts where work can be carried out from a footpath within the village of Cockshutt or from the safety of a properly equipped & road signed hedge cutting tractor used by a competent operative.

Scope of works to be undertaken

- Street cleanliness to include such things as litter picking, sweeping footpaths, treating weeds
- Road signage to include cutting back of vegetation (verges & hedges), cleaning signs, repair/replace faded/damaged signs
- Management of vegetation at road junctions to improve visibility for joining traffic
- Street name signs-upkeep & maintenance
- Bus Shelter cleanliness including cleaning the glass
- Road drainage maintenance such as clearing blocked road gullies, manholes, pipe runs & ditches
- Digging relief soakaways (grips) in road verges to drain areas of identified road flooding

Execution of the works

- The PC will appoint a councillor to oversee & direct works
- The work will be done by a person/contractor on a contract basis who will provide labour, plant & materials. These costs will be reimbursed on the basis of tendered rates and actual time & costs expended.
- The contractor will be required to provide a Risk Assessment to cover all of the likely works and evidence that they have Public Liability Insurance (Insured Sum??) appropriate for the work being carried out.
- Hedge cutting on Highways to comply with the law and with NFU advice on the topic.
- It is envisaged that the work will be done throughout the year (April-March), but on an as required basis.
- An outline schedule of works for the year will be agreed at the outset, with more detailed schedules at intervals throughout the year.

Tendering process

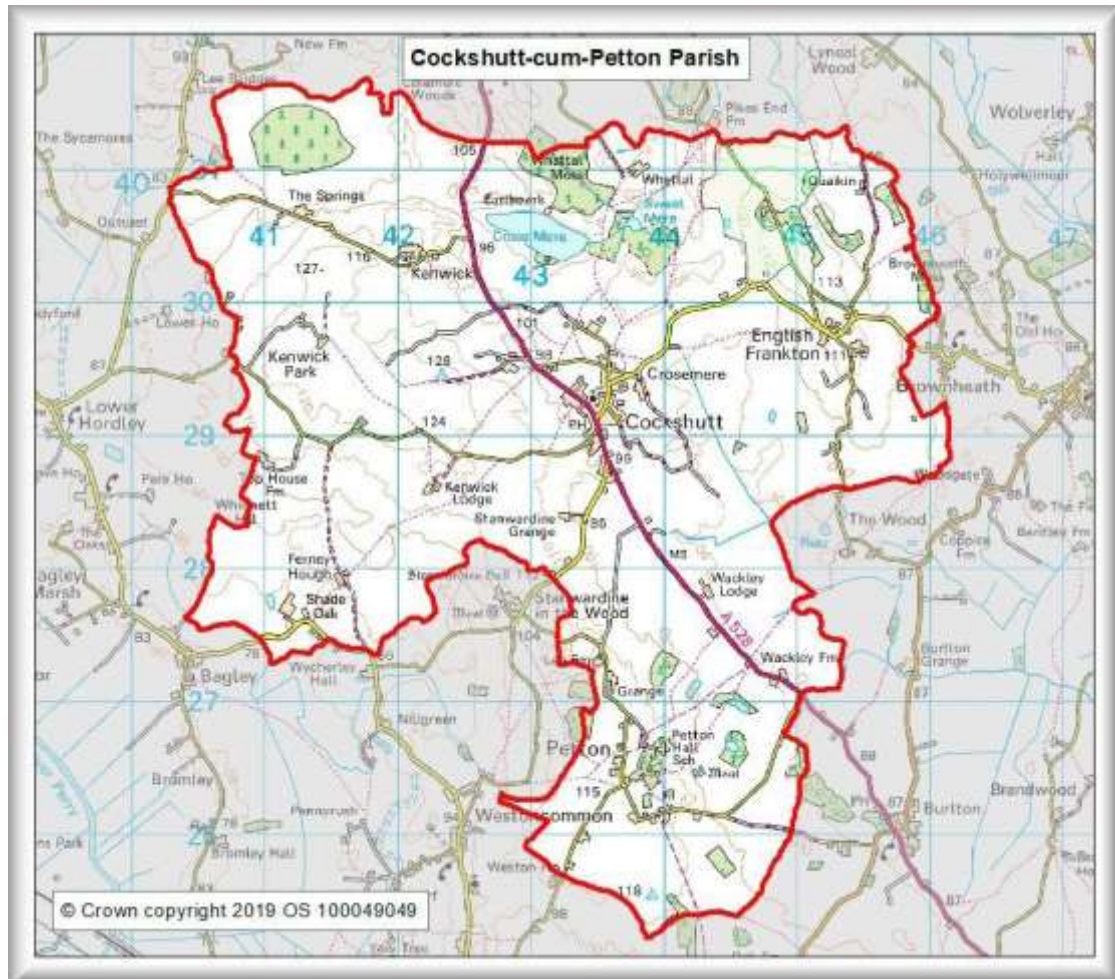
- The PC is to advertise the contract and seek tenders based on hourly rates for labour and mark-up on plant & material costs.
- The SC Scheme places some emphasis on enhancing the local economy, so we should encourage tenders from within the Parish if possible.

Payment for work

- Invoices for work done in a month must be submitted the Clerk of the PC by the 5th of the following month in order that the payment can be approved at that month's PC meeting.

Cockshutt-cum-Petton Parish Council

OS Plan showing the extent of the Parish within the red boundary



The road shown in purple is the A528 Shrewsbury to Ellesmere main road.

The other Shropshire Council owned roads are shown in yellow.